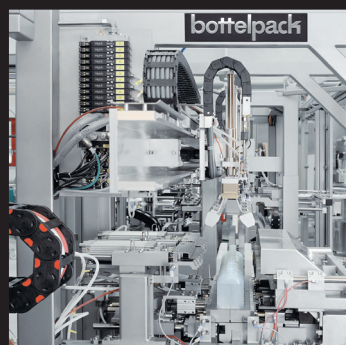


The Hansen Group

Products and Services



bottelpack Packaging systems



Test- and Contract filling



Film extrusion & manufacture of Flecotec products

Companies

The Hansen Group of Companies, located in Germany and Switzerland, is a successful and globally recognized partner of the pharmaceutical and cosmetics industry.

kocher-plastik and **maroplastic** are the world leaders in the development and production of bottelpack aseptic systems. **rommelag**, with its four sales companies, is managing all the Sales and Services worldwide.

holopack and **maropack** are contract manufacturers, mainly in the pharmaceutical sector, ensuring the most favorable filling of the customers liquid and semi-finished products.

thermo-pack specializes in blown film extrusion, prepress and flexoprint, and the manufacture of **FLECOTEC** cleanroom products.

flecotec develops flexible and disposable, single-use docking systems for the contamination-free charging and discharging of sensitive or toxic bulk products.

Flecotec AG
Schweighofstrasse 3 • 79410 Badenweiler, Germany
Tel. +49 7632 82 85 53 0
Fax +49 7632 82 85 53 9
info@flecotec.com
www.flecotec.com

ZIP+TRIC_2015-06_EN_V01

FLECOZIP®

FLECOZIP – Flexible Containment Zip – This is a new and innovative docking system that introduces a broad range of applications in the pharmaceutical, chemical and food industries. The main application area for the **FLECOZIP** docking system is the contamination-free docking, transfer, and undocking, while handling sensitive or toxic bulk products.

The **FLECOZIP** closure can be used as a primary containment interface for direct material handling and transfer of bulk solids, but also as a secondary containment interface to take samples using the **FLECOZIP** Glove Bag, and as a Rapid Transfer Port (RTP) using a **FLECOZIP** Glove Box.



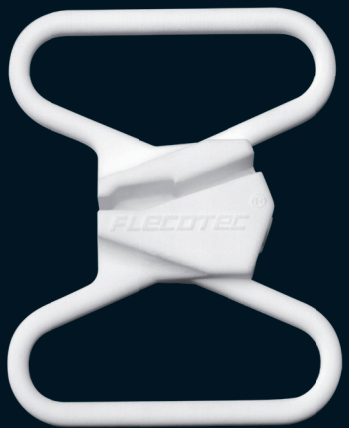
FLECOZIP
as primary containment
interface



FLECOZIP
as secondary containment
interface (sampling)

The basic component of the **FLECOZIP** docking system is the patented zip fastener, consisting of two mirrored sections; e.g. two complementary profiles creating an interface. Each half-fastener connects the **FLECOZIP** Bag (container) and the **FLECOZIP** Adaptor to the process unit, sealing it dust free.

Slider



Docking, closing & undocking is performed by the **Slider**. The **Slider** is a separate tool which securely and safely connects the two half-fasteners to one another.



docking



opening



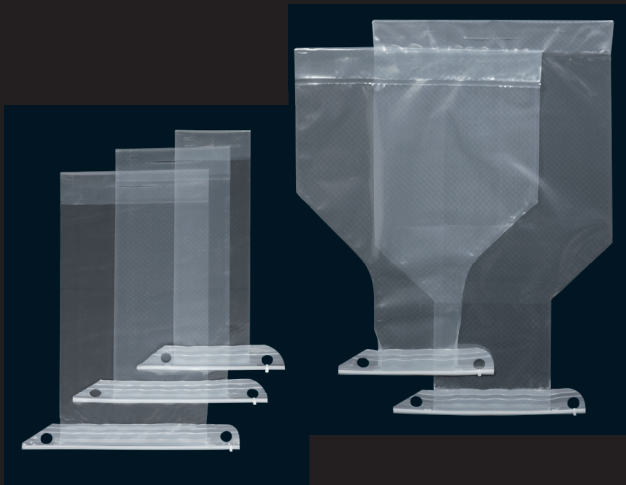
closing



The plastic film used in the pre-fabricated bags and adaptors is available in various lengths, widths, and strengths (standard film thickness 130 micron). The film is anti-static and the bags and adaptors come with the required certificates, conforming to GMP and FDA guidelines.

All items are produced in clean room conditions and remain in this environment until final packaging and shipment. Upon request, final products can be Gamma sterilized and are therefore also suitable for use in sterile applications.

As all our products are developed in-house, a wide range of versions is available including numerous custom-made presentations. In addition, various tubular film diameters can be produced depending on the needed container volumes, ranging from ml sizes up to 100 liter bags and more.

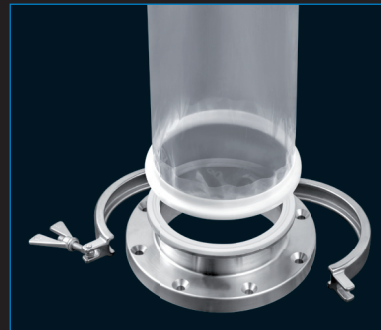


FLECOZIP Bags with FlecoZip as the primary
containment interface

FLECOTRIC®

The **FLECOTRIC** – Flexible Containment Tri-Clamp – is the flexible solution for creating a Tri-Clamp interface for the connection of an open tubular film end, e.g. a **FLECOZIP** Adaptor or a **FLECOTRIC** Charge Bag, to a Tri-Clamp connection flange of a complementary processing unit.

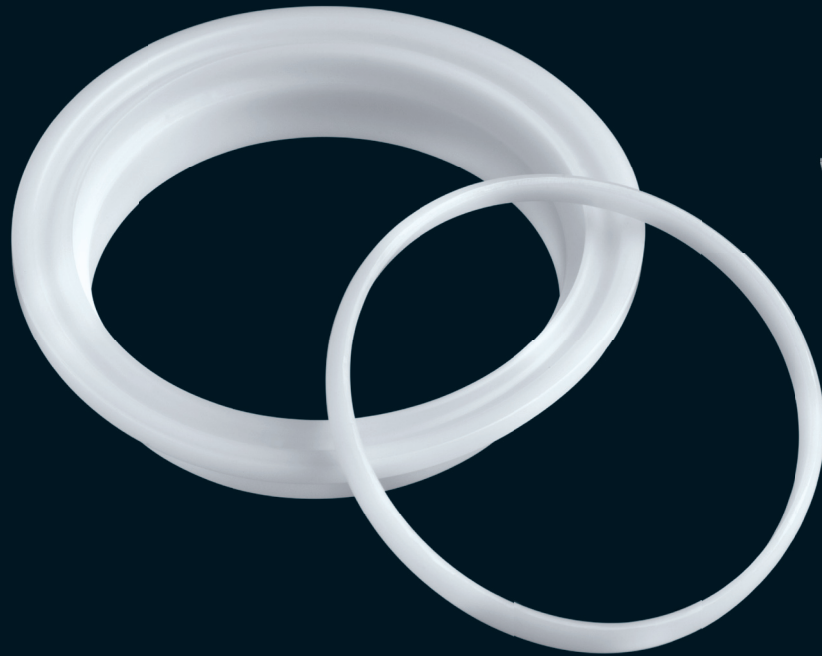
The **FLECOTRIC** can be directly mounted on the counter-flange with a standard Tri-Clamp and an appropriate gasket.



FLECOTRIC connections

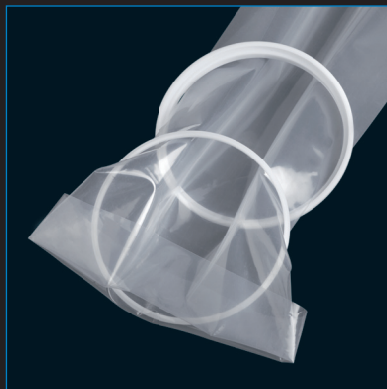


FLECOTRIC Charge Bag



FLECOZIP Adaptors with **FLECOTRIC**
Rings (assembled)

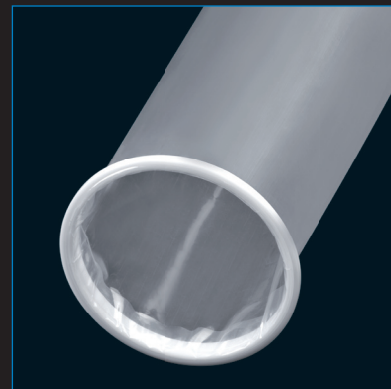
The following assembling steps must be performed to set up the standardized Tri-Clamp interface using **FLECOTRIC**:



Positioning of the **FLECOTRIC**
Rings at the film tube end



Folding the tubular film end
around the **FLECOTRIC** Inner
Ring



Clipping the **FLECOTRIC** Inner
Ring in the Outer Ring