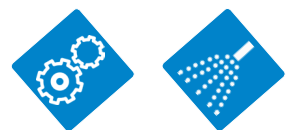




External Decontaminating Machines EDM



EXTERNAL DECONTAMINATING MACHINES EDM-C - EDM1 - EDM2 - EDM3



EDM1

STERILINE decontaminating machines are designed to clean the external surface of vials and ampoules with a capacity up to **48.000 pcs/h.** Purified water, W.F.I., detergent and detergent mixtures are media options used for surface decontamination. Compressed air dries the decontaminated ampoules and vials. Star-wheels drive the glassware through the various washing and drying stations. The star-wheels side guides, made of

silicone, are self-adjustable, according to the different glassware diameters, in order to create friction that causes a rotation of the glassware. The diameters of the vial carrier pockets of the star-wheels are cut to fit specific glassware diameter ranges.

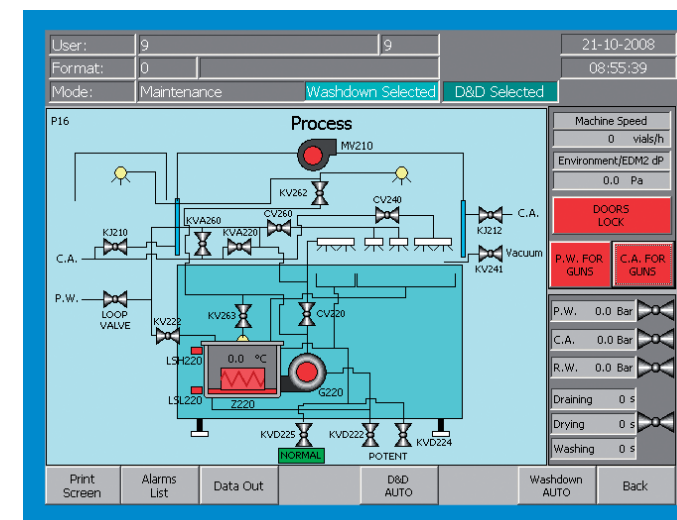
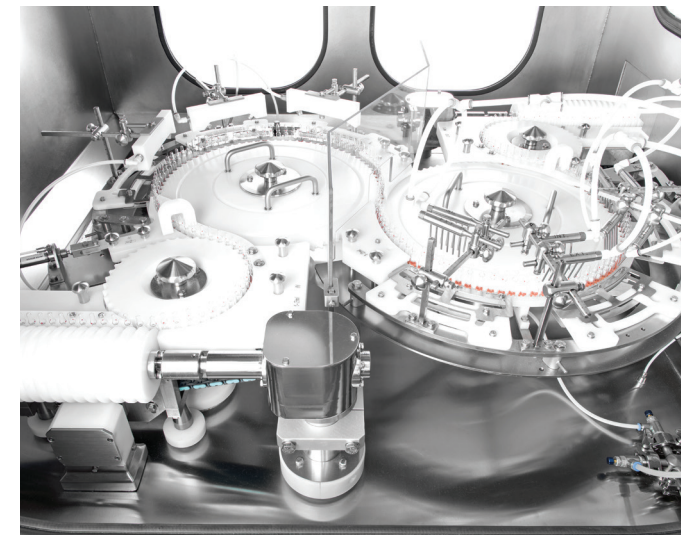
The washing fluids spraying nozzles are specifically designed and contoured to avoid process fluid introduction at the seal level.

The compressed air blowing nozzles remove the residual washing fluids

from the outer glass surfaces. Changeover parts consist only of star wheels, infeed and outfeed guides. Nozzles are adjustable.

The STERILINE decontaminating machines main features are:

- High washing efficiency;
- Highly effective drying;
- Protection of the seals;
- Flexible transport system;
- Short and reliable changeover time;
- Longer processing time.



The decontaminating machine has a conveyor belt that is loaded by trays or by the upstream machine's conveyor.

The conveyor belt feeds the glassware to the washing star-wheel that has hollows suitable for the diameter of the glassware.

The washing star-wheel transports the glassware through the washing stations. There can be up to three various types of fluids used to wash the ampoules and vials.

The drying star-wheel transports the glass-ware through the drying station. Thorough drying is achieved by special nozzles that blow compressed air on the vials.

At the end of the drying star-wheel the vials are unloaded onto trays. The machine can also be connected in-line to a downstream machine (e.g. labelling machine or tray-loader). Accident prevention hood as well as negative pressure RABS* are available.

* RABS: Restricted Access Barrier Systems

Integrated control system, including PLC and HMI, automatically controls all the process and functional parameters of the machine, according to various glassware sizes and types. Parameters are stored in different recipes, protected by password, accessible only by supervisor and authorized personnel.

All decontaminating machines are built in compliance with cGMP, GAMP and 21CFR Part11 requirements.

MODEL	DIMENSIONS LxWxH (mm)	OUTPUT (pcs/min)				WASHING FLUIDS CONSUMPTION (l/h)	COMPRESSED AIR CONSUMPTION (Nm³/h)
		2-4R	6-15R	20-30H	50-100H		
EDM-C	850x700x2700	100	60	30	10-20	150	30
EDM1	1350x1250x2700	400	200	150	80	200	60
EDM2	1700x1450x2700	800	300-400	250	160	400	80
EDM3	1560x2190x2100	800	300-400	250	160	800	100



Steriline S.r.l.

Via Tentorio, 30
22100 Como - ITALY
T +39 031.592064
sales@steriline.it
www.steriline.it