

## Big bag discharge station for efficient handling of bulk materials

### Reliable and low-dust discharge

**For big-bags with an inner liner, and is available with a liner tautness device.**

**The discharge station is equipped with a vibrator or bag massager.**

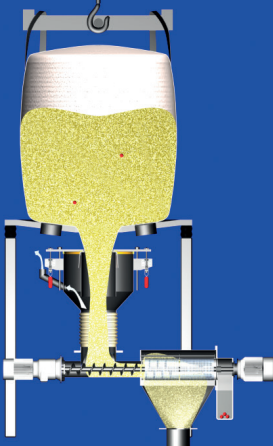
### Preferred applications

This versatile and efficient unit is used for optimal discharge of big bags in closed automated feeding systems. The big bags is becoming more important as an environmental-friendly method of shipping and handling ingredients.

### Special advantages

- Reliable and low-dust discharge of bulk materials into the process
- Big bags are used for materials with even low use rates since they are an environmental-friendly shipping and handling container.
- The station also works well with big bags with an inner liner, and is available with a liner tautness device.
- For difficult to discharge materials, the discharge station is equipped with a vibrator or bag massager.
- The interface with the downstream process is designed to meet the specific requirement.

### DIE INNOVATION

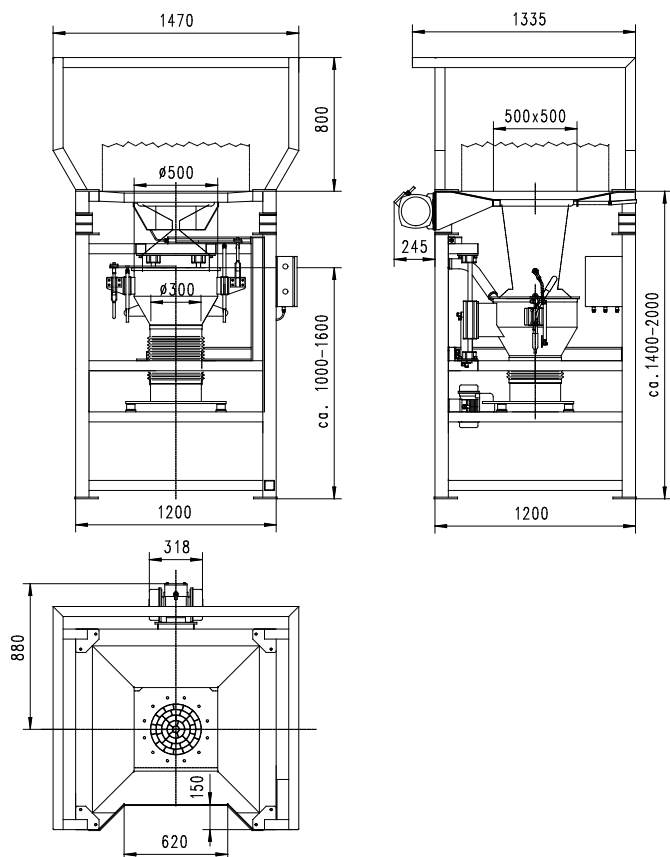


### How it works

The big bag is suspended from a frame attached to a hoist, moved to the big bag discharge station, and placed on the support table. The big bag discharge sleeve is placed over the discharge pipe and fastened by manual or pneumatic lowering of the clamping disc. The draw string is opened and the connecting system is pneumatically lowered to tauten the big bag discharge sleeve. Safe discharge of material into the downstream process can then begin. For difficult to discharge materials, the big bag

support table is equipped with a vibrator or big bag massager. Optional low-level indicators are available to provide indication of low product level for big bag changing in time.

## Technical data



Available for:	Standard big bags with discharge sleeve
Max. big bag size:	1200x1200 mm (big bag fully expanded)
Compressed-air consumption:	8.3 l per lifting cycle p = 6 bar
Material of construction:	Frame: Epoxy Coated Steel
	Optional: Stainless steel type 1.4301 (304)
	Parts in contact with product: Stainless steel type 1.4301 (304)
	surface finishes A2-1 to A2-4
Weight:	270 kg (595 lb.)
Electrical Classification:	IP 54
Nominal voltage:	400 V / 50 Hz or 240/480 V / 60 Hz
Control voltage:	24 V or 110 V
Connected load:	0,55 kW, 1,3 kW with DFS 100
Noise level:	< 70 dB (A)

## Connection operations



Discharge system raised, with opened clamping disc.



Big bag discharge sleeve connected to discharge tube, and fastened with the clamping disc. Draw string on big bag outlet released.



Lowering the connecting system tensions the big bag discharge sleeve. The big bag is now ready for discharge.



AZO GmbH + Co. KG  
D-74706 Osterburken  
Tel. +49 (0)6291 92-0  
azo-group@azo.com  
www.azo.com

The design is subject to change due to our continuous improvement program.