

**DIAMIND** | LINE

WEIGHT CONTROL

# CHECKWEIGHERS

FOR MEDIUM AND LARGE PRODUCTS

*BR Series*

**CHECKWEIGHERS FOR MEDIUM-BIG FORMATS,  
STURDY AND WITH CAPACITY UP TO 12000 GR**

- Ensures compliance with net weight legislation of primary packagings
- Checks the completeness of secondary packagings
- Avoids costly penalties and safeguards brand protection
- Saves costs by reducing product giveaways
- Improves packaging process and increases OEE
- Manages interconnection in compliance with Industry 4.0
- Intuitive and user-friendly interface

## FEATURES

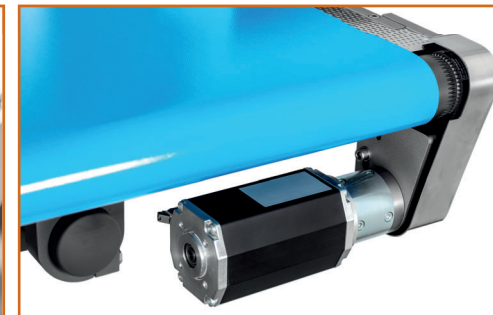
- Brushless motors and planetary gearboxes
- Rollers with transmission without pulleys
- Hygienic design, quick-removal conveyors, washable structure
- Designed to manage considerable weights and dimensions in plants with high productivity and efficiency



**Infeed conveyor**



**Outfeed conveyor**



# CHECKWEIGHERS FOR MEDIUM AND LARGE PRODUCTS

## MODELS

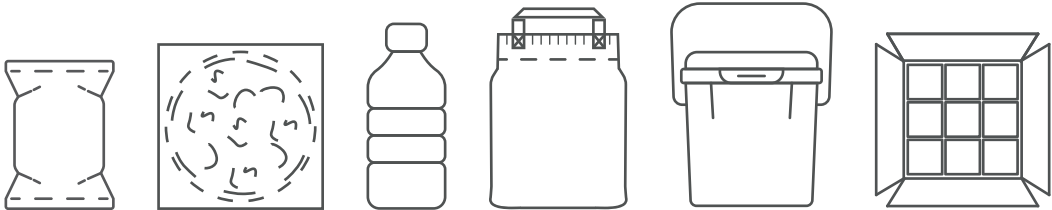
CODE	CONVEYORS WIDTH	WEIGHING RANGE	ACCURACY *	DISPLAY DIVISION
BR-6000	240 - 320 - 420 mm	6000 g	± 1,0 g	1,0 g
BR-12000	350 mm	12000 g	± 2,0 g	1,0 g

\* variable according to the type and weight of the procluct and the production speed

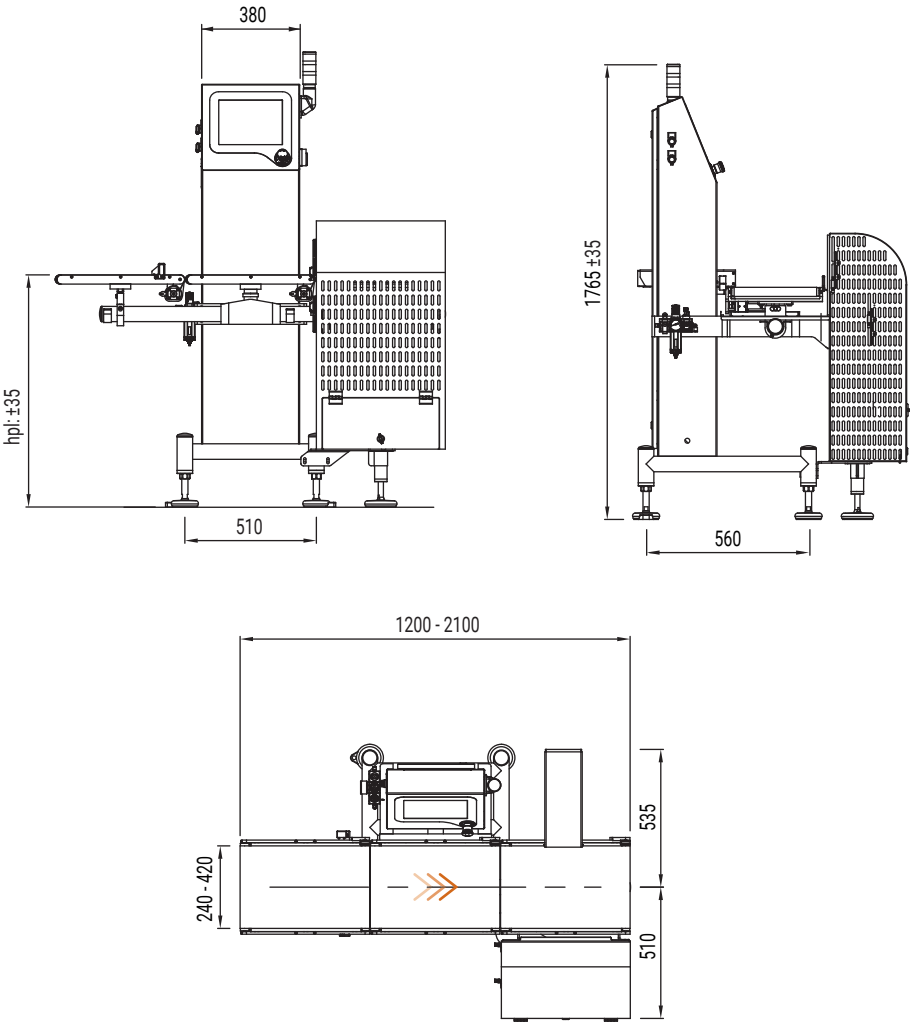
## STANDARD TECHNICAL FEATURES

Control panel	colour touchscreen 12"
Data processing electronics	RISC embedded FPGA
Self-learning system and Calibration	included
Data collection software	included through Ethernet and USB
Kit for remote assistance	included
Compliance industry 4.0	with bidirectional protocol
Conformity	CE, MID, BRC, IFS, HACCP, GMP
Linear speed	up to 60 m/min
Production	up to 150 ppm
Protection degree	IP65

## PACKAGING



## LAYOUT



FT System S.r.l.  
Via L. Da Vinci, 117 - 29010 Alseno (PC) - ITALY  
T. +39 0523 945 745 - [info@antaresvisiongroup.com](mailto:info@antaresvisiongroup.com)  
[www.antaresvisiongroup.com](http://www.antaresvisiongroup.com)



ANTARES VISION  
GROUP

EXPERIENCE THE POWER  
OF TRUSTPARENCY®