



EXICOM

Bühler Control  
Systems.  
**User-friendly  
solutions for  
maximum  
efficiency.**

Innovations for a **better world.**

**BUHLER**



**Every business and every product is different. We make sure you benefit from an automation solution that is perfectly tailored to your needs.**

### **Benefits of Bühler Control Systems**

- Intuitive design for maximum productivity
- Ideal product and machine handling for optimal profitability
- Auxiliary features for higher process reliability
- Elaborate data management for quality assurance
- Remote access for easy process monitoring



# Bühler Control Systems.

## Flexible solutions – tailored to your needs.

You must be able to rely on your processes. They need to run smoothly and handle countless demands, such as for maximum product safety, efficient energy use or easy operation. As a solution provider with decades of experience in automation, Bühler sets industry standards and delivers the highest possible quality.



### COMFORT

#### **Convenient solution with manual operation.**

The machine is controlled entirely by pushbuttons whereby signal lamps and displays indicate the machine status. Depending on the process, the rotor speed can be selected.



### PREMIUM PLUS

#### **Enhanced solution with extendable functionalities.**

The Premium Plus control offers advanced features and can integrate the control of tanks, peripherals and pre-grinding machines.



### WINCOS®

#### **Comprehensive plant control system for fully automated processes.**

With WinCos®, we offer a plant control system that fulfills every demand – module by module, characterized by great flexibility and individual support.

# Premium Plus solution.

## Excellent process control.

### Job wizard

BUHLER 02/03/2017 12:57:52 PM Automatic User6 6

Job details

Step 1 Step 2 Terminate

Job number

Batch size 0 kg

Loaded recipe Black-367K

Start Job

Process values

"Next" to select recipe

Cancel Next

### Integrated machine visualization with menu options

BUHLER 01/03/2017 0

Job: Test-2  
Recipe: Black-367K

tel 0:06 h:m  
tre 0:08 h:m

Es 21 kWh/t  
P 13.2 kW

vR 11.0 m/s  
To 49.2 °C

Machine diagram with various control points and status indicators.

### Main menu

BUHLER 02/03/2017 01:34:01 PM Automatic User2 2

Job: Test-01  
Job stopped

Overview Recipes Machine Settings

Process Values Curves Jobs System Settings

Cockpit Walk-by Maintenance User Management

### Recipe menu (example)

BUHLER 02/03/2017 02:12:05 PM Automatic User8 8

Recipes 001 - 003 (of 003)

Black-367 18.01.2017 10:02:31	Black-367K 18.01.2017 11:56:11	Blue-302 18.01.2017 10:02:31	Blue-367 18.01.2017 10:02:31	Blue-386 18.01.2017 10:02:31
Gr-384 18.01.2017 10:02:31	Gr-386 18.01.2017 10:02:31	Kreis 14.01.2017 11:21:10	Kreis-2 14.01.2017 11:21:10	Red-100 18.01.2017 10:02:31
Red-105 18.01.2017 10:02:31	Red-108 18.01.2017 10:02:31	Spuelen 14.12.2016 09:01:13	Yel-105 18.01.2017 10:02:31	Yel-156 18.01.2017 10:02:31

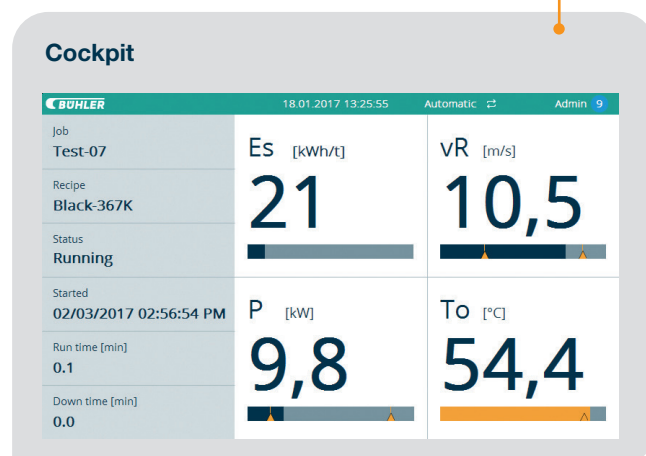
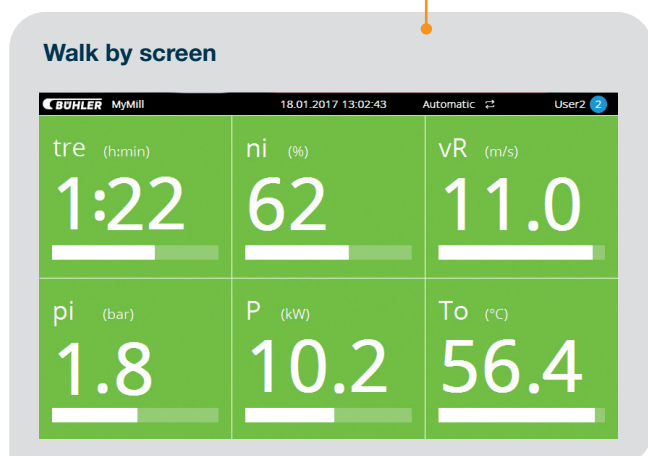
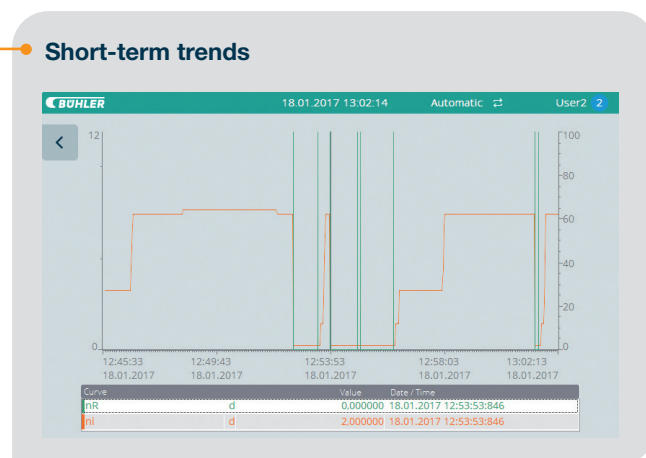
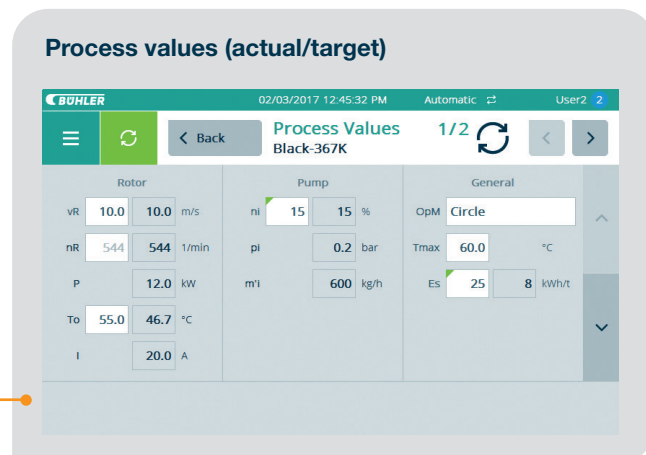
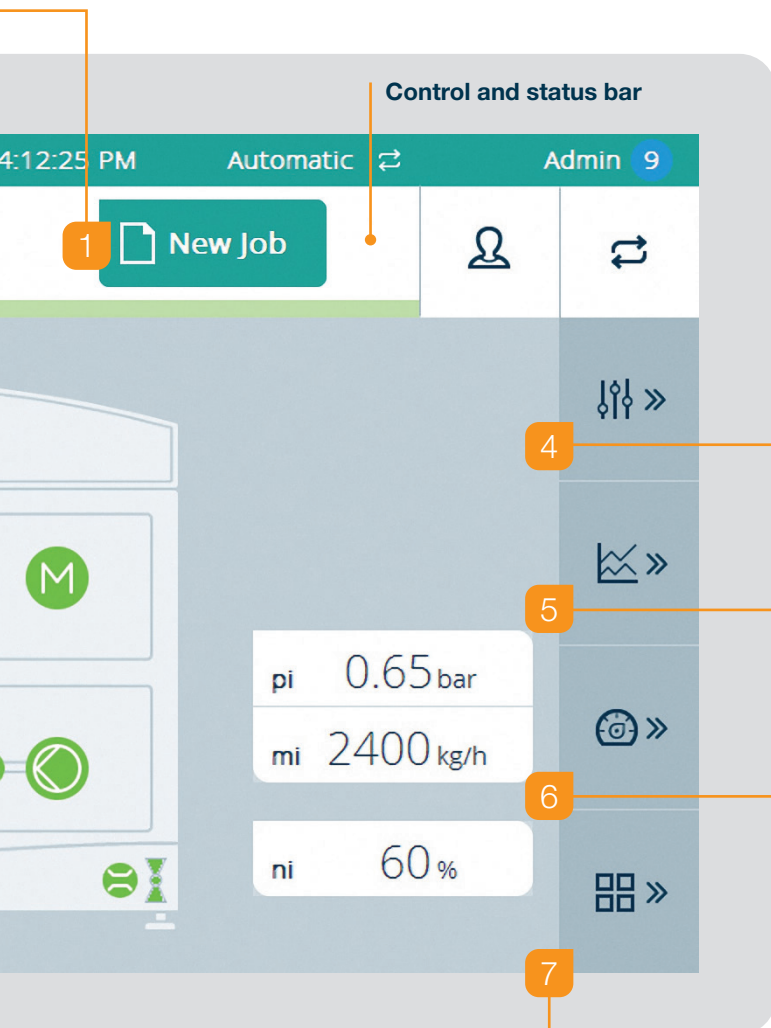
Delete Statistic Load

### Maintenance menu (example)

BUHLER 02/03/2017 04:17:36 PM Automatic User8 8

Maintenance Selection

Alarm history	Operation hours Energy	I/O status
Alarm ranking	Maintenance intervals	
System message history	Maintenance protocol	



# Smooth operation with maximum benefits.

## Taking efficiency to the next level.



### Intuitive design for maximum productivity

The intuitive design and user guidance simplify the correct operation of the machine. The control is easy to use which makes extensive trainings unnecessary. Additionally, a walk by screen with color coding shows warnings and standstills at a glance even from a distance.



### Ideal handling of product/machine for optimal profitability

With Bühler control systems the machine can be used to its full extent. An intelligent cockpit shows current process parameters including the optimum range of operation, which allows immediate adjustment. Further features, such as a job wizard, support the correct and fast start-up of the machine.



### Auxiliary features for higher process reliability

Integrated recipe assistants allow a production process with up to five steps enabling an ongoing adjustment of process parameters to the changing product characteristics. Additionally, various start ramps ensure a fast production start tailored to the product. The result is higher process reliability in less time.



### Elaborated data management for quality assurance

The control system uses intelligent data management for quality assurance and optimization. The user is able to access the past 200 jobs allowing replication and traceability of the production. Further optional measuring systems show improvement potential and enable inline quality control. Additionally, in order to preventively maintain the machine, the occurring errors are tracked and ranked. This allows an easy monitoring and scheduling of maintenance.



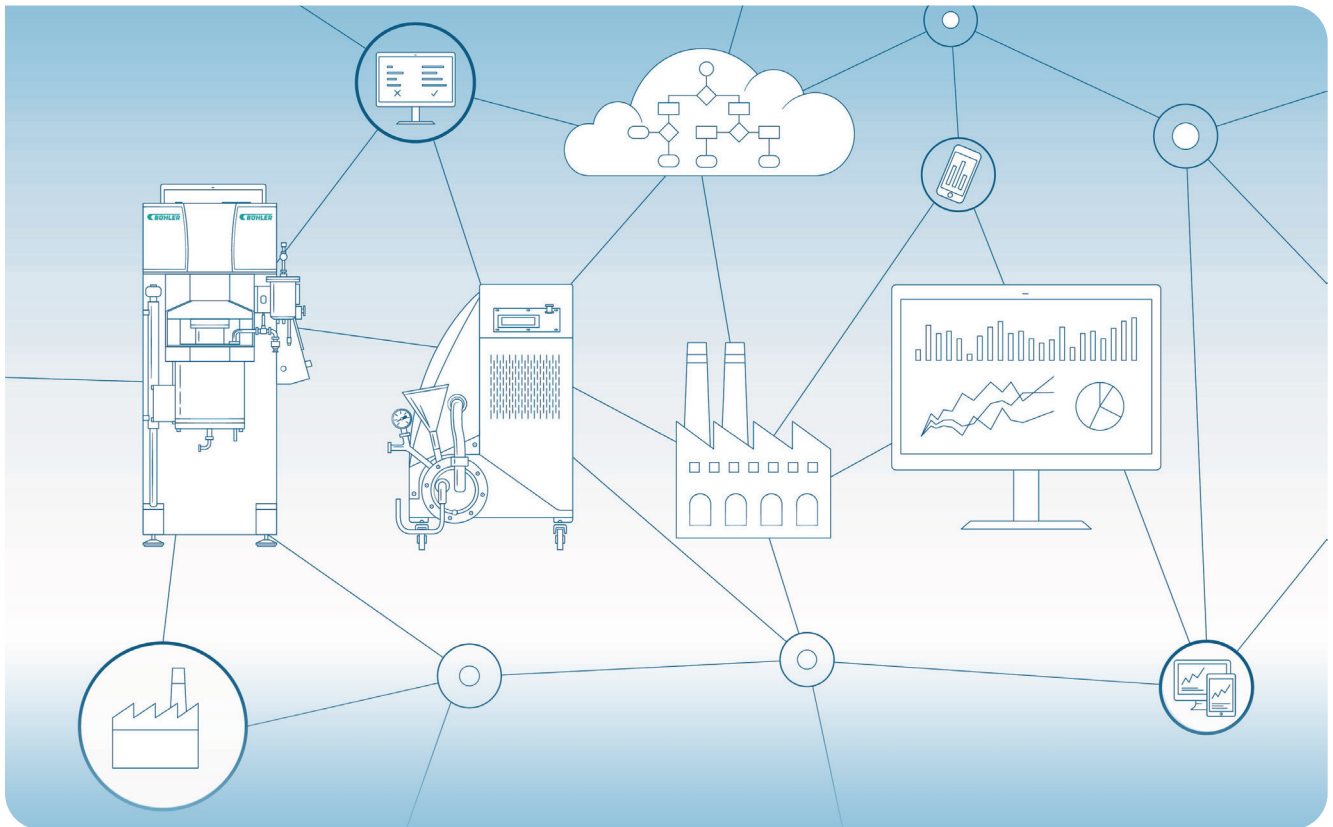
### Remote access for easy process monitoring

The Premium Plus solution gives remote access to the control system, which greatly improves process monitoring. Standstills are detected more quickly and can potentially be resolved without being on site. This saves costs and increases productivity. When required, Bühler Customer Service representatives can remotely access the system ensuring quick and inexpensive servicing.

Digital Services.

**We are your trusted partner in digitalization.**

Our vision is to enable fully connected plants that improve themselves autonomously by continuously exchanging information between machines. Your plant is fully connected and improves itself autonomously by exchanging information from machine to machine.





## Bühler AG

CH-9240 Uzwil  
Switzerland

T +41 71 955 11 11  
F +41 71 955 31 49

[grinding.dispersion@buhlergroup.com](mailto:grinding.dispersion@buhlergroup.com)  
[buhlergroup.com](http://buhlergroup.com)

180910\_Automation\_EN\_A4

**BÜHLER**