

COMPETENCE IN ROTARY VALVES

Our industry leading rotary valves play an integral part in the efficiency and safety of a powder handling process. Thanks to their highly modular design, Gericke RotaVal valves can be adapted for virtually all types of product characteristics and applications, from heavy duty to the highest hygienic standards.



RotaVal.

THE ROTARY VALVE EXPERTS FROM GERICKE

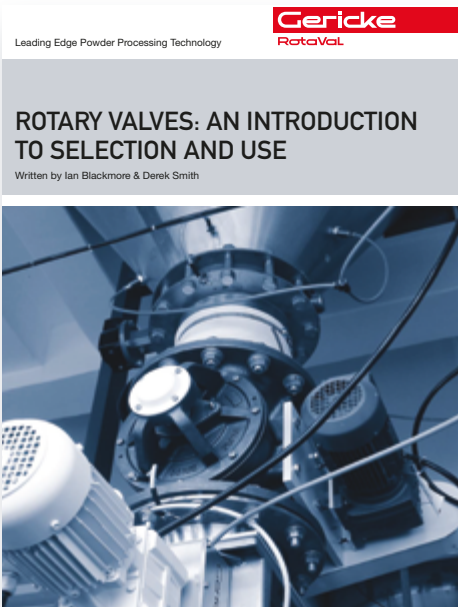
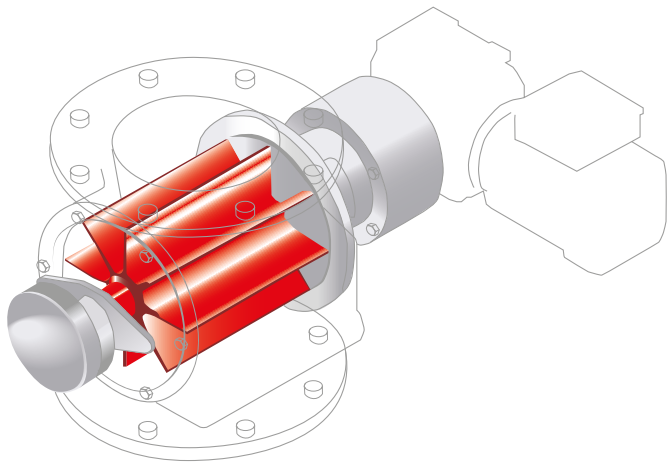
What is a rotary valve?

Rotary Valves are compact devices widely used in bulk handling systems to control the discharge of powders and granular solids, normally under gravity, between two parts of a system; usually when there is a gas pressure differential between the two parts.

RotaVal – A brief history

The RotaVal Company was initially founded in 1970 and was led by its initial founder for 40 years. Following his retirement in 2010 we successfully transitioned to our next generation of leadership and employees by developing their skills to higher levels while embracing technological changes.

RotaVal is part of the Swiss based Gericke group, a leading supplier of solutions for powder handling and processing.



For more technical information:
Download the free Introductory Guide from
our website!



KEY APPLICATIONS



Pneumatic Conveying

Lean or dilute phase conveying systems are the ideal solution for transferring bulk materials that do not require particle preservation and are not abrasive. Its advantage lies in the versatility of products that can be conveyed as well as in the space saving setup.



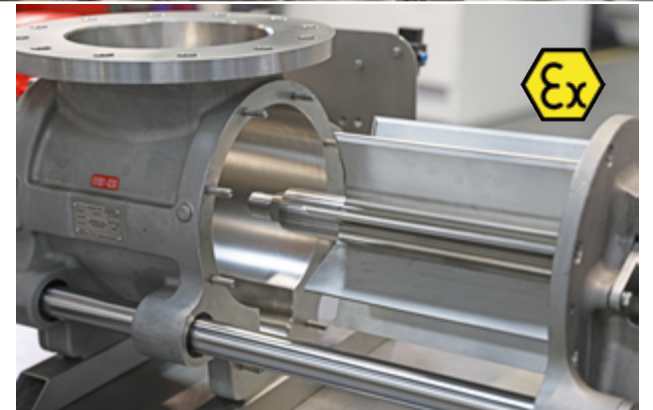
Filling

Acting as efficient airlocks with low leakage characteristics our rotary valves enable accurate and timely operations.



Metering and Reactor Loading

Our rotary valves are designed to ensure optimal metering efficiency of any bulk material. The modular design has features that will improve throughput and reduce your total energy consumption.



Hazardous Areas

Our valves are fully certified to be installed in hazardous areas and act as flame barriers or for pressure containment if required.

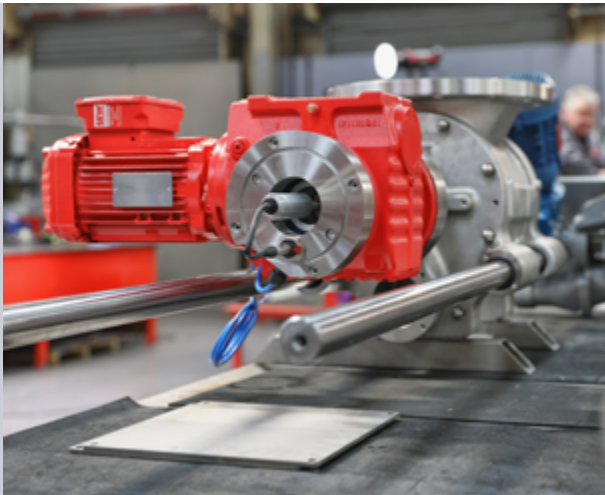
GERICKE RotaVal.

BECAUSE IT IS NOT JUST A ROTARY VALVE

RotaSafe™

Instant Contact Detection to Protect Your Process

The rotor protection system RotaSafe™ is designed to instantly detect any contact between the rotor and valve housing while at the same time sending a signal to the panel to isolate power to the drive motor. It will primarily be of interest to customers where product contamination due to metal to metal contact is a significant issue.



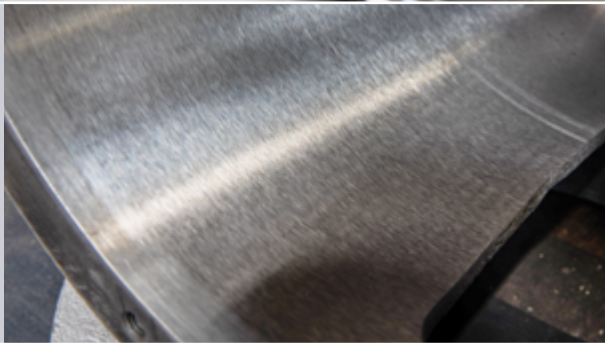
Tapered Bore

To prevent potential product contamination our unique tapered bore with matching rotor design and guide rails provide scratch and damage free rotor extraction and insertion.



Coatings

In addition to standard stainless steel and cast iron construction special product contact surface coatings are available such as Chrome, Tunsten Carbide, Xylan and Plasma Nitride.



Individually Pressure Tested

For all our autonomous and explosion proof ATEX valves a hydrostatic test is carried out up to 20 bar and certified up to 10 bar on each and every one of them, for your safety and the reliability of your production.



External Wash in Place

This option allows pressure wash cleaning of the exterior surfaces of rotary valves in demanding services and environments to enhance plant cleanliness, increasing reliability, and reducing downtime and operational costs.



Rotor Alignment

Patented Rota-lign™ locking system provides for repeatable rotor installation reducing significantly maintenance turnaround times.



Always the Right Rotor Design

Whatever the product handled, including abrasives we have a rotor to suit the application.



Global Service

We speak your language! With our global network of subsidiaries, test centres and partners, we support our customers in all parts of the world. Wherever you are, we will be with you.

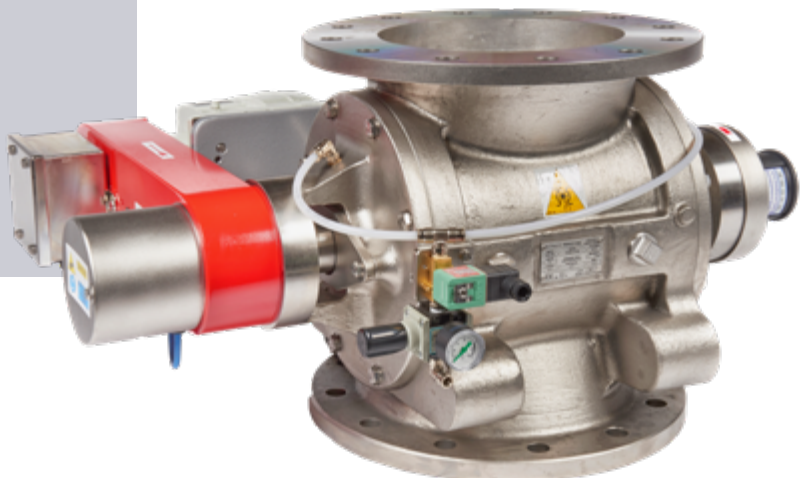
THE MODULAR RANGE. OFTEN COPIED, NEVER MATCHED

Available in drop through and blowing seal designs.

HEAVY DUTY HDM / BSM

This is our general purpose rotary valve line, able to cover many standard applications.

This family of valves has been designed using finite element analysis to make the housing even more robust.



CLEANABLE HDMC / BSMC

The cleanable rotary valve is a cost effective solution based on the heavy duty version for occasional inspection and maintenance of the internals.

The non-drive end cover can be quickly removed to gain access for cleaning which can be carried out by plant operators without the need for special tools.

Various standards of finish are available to suit most hygienic applications.

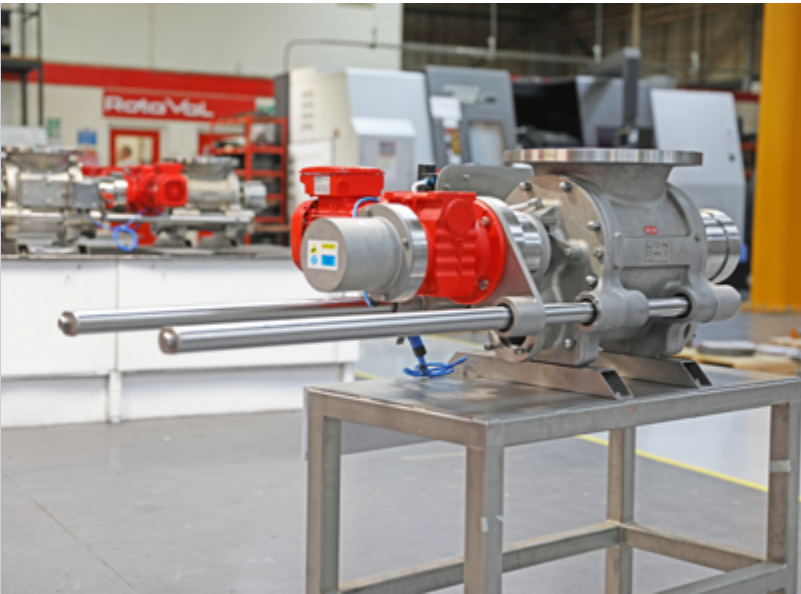


FAST CLEAN HDMF / BSMF

The USDA Dairy and EHEDG qualified fast clean rotary valve provides users with increased productivity through a design that realises minimal down time for frequent cleaning of valve internals.

The non-drive end cover incorporates the Rota-lign™ bearing assembly. this coupled with the taper bore feature makes the design operator friendly and eliminates process and product risk.

Both end opening for full access to internals is available. A robust construction makes this fast clean range suitable for use in all types of industry.



Why Rotary Valves from RotaVal?

- Tapered bore eliminates risk to damage rotor or housing
- Perfect accessibility for inspection and cleaning
- RotaSafe™ metal detection to protect your production



HYPERGIENIC VALVE

State-of-the-art for pharma and food



Developed in co-operation with the pharmaceutical industry, the fully machined from solid design embodies a range of detailed features that validate the design and construction for the dedicated purpose. There is an easy clean version and a fast clean railed version.

Meet the highest standards

RotaVal Hypergienic HGMC Rotary Valves are designed to meet the critical needs of the pharmaceutical and food industries. The innovative and flexible design allows for variations to individual units to be included to meet customer specific requirements, including all required validation documents.

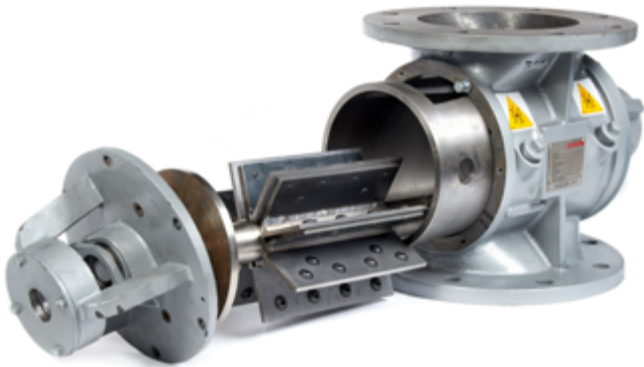


EXTRA HEAVY DUTY VALVES

When the going gets tough

The RotaVal EHDM / EBSM units have been well-proven over many years and are widely used in discharging under adverse pressure conditions, materials such as cement, PFA, granite dust, silica sand, mineral powders etc.

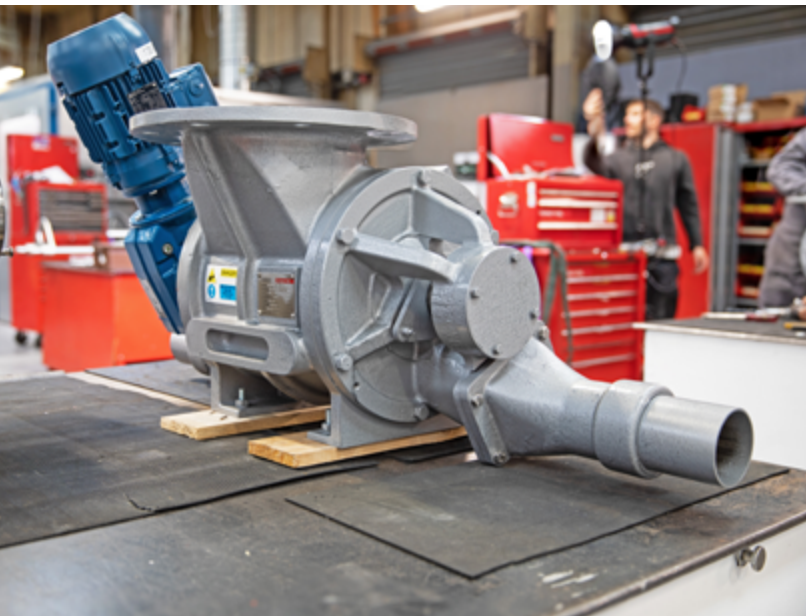
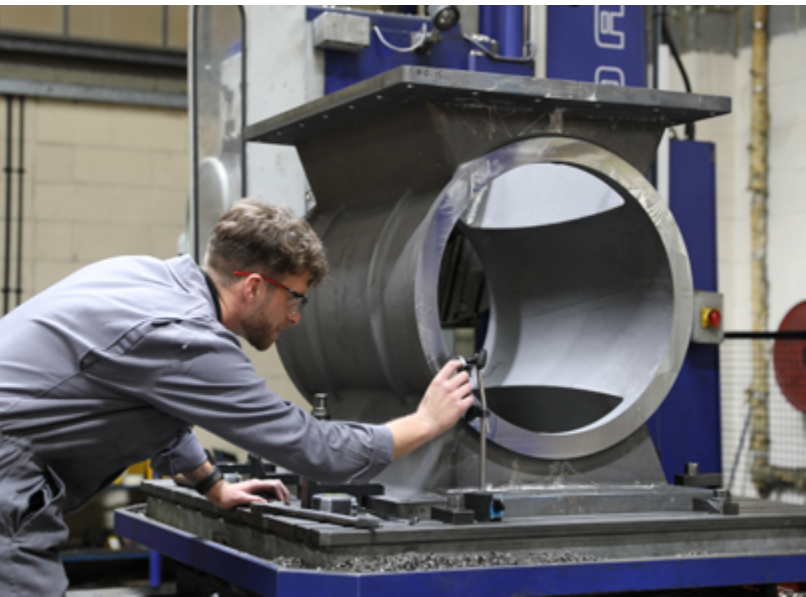
- Replaceable internal components allow for on-site refurbishment.
- Standard valves manufactured in cast iron / SG iron / carbon steel construction with round flange. To further enhance durability replaceable body liner can be hard chromed or ceramic coated.
- Rotor shaft sealing options include various types of gland packing, mechanical seals, air or grease purge. NOTE: Service life of these valves will vary according to the service conditions prevailing. Selection must be undertaken with care and system conditions where possible adopted to ensure maximum service life.



SPECIAL PROJECT VALVES WE DO NOT STOP AT 500 MM

We supply special purpose and non-standard size valves for the steel, chemical & tobacco industries regularly.

Our design team thrives on finding solutions for challenging applications.



THE COMPLETE AFTER-SALES SERVICE.

Our valves are built to last a life-time when carefully maintained and serviced. We view the sale of our valves as just the start of our partnership with our customers. We are here to support and offer advice for the long-term.



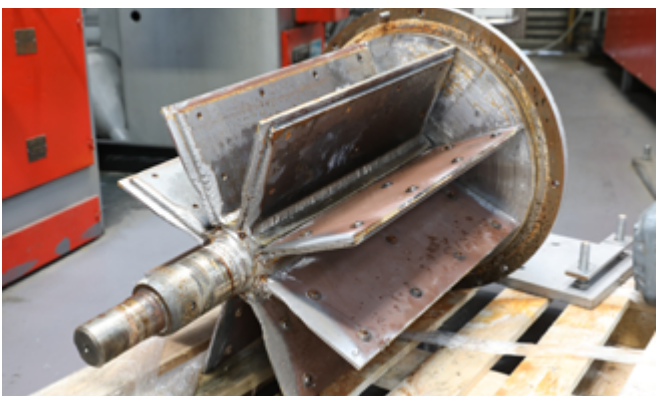
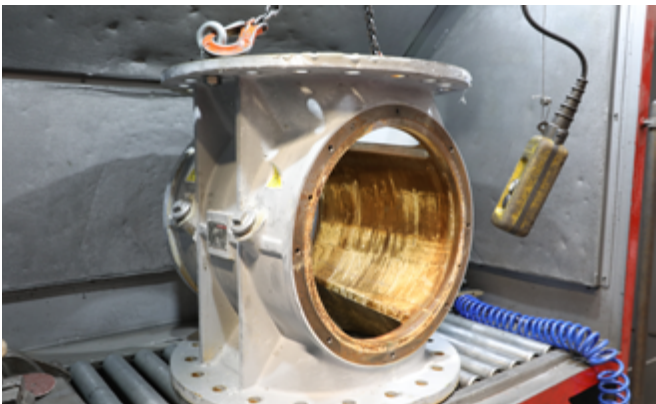
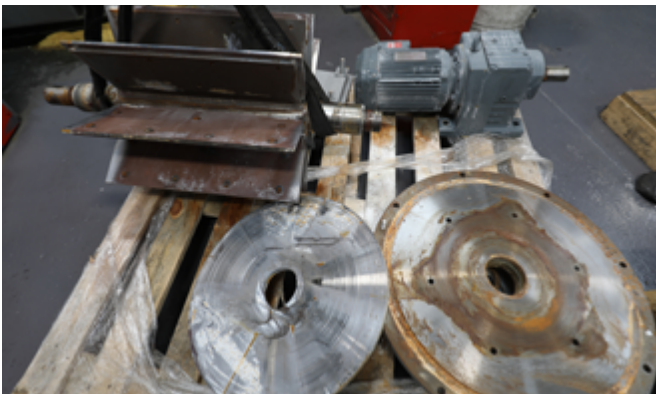
On-Site Surveys
Not sure what you need or having difficulties with existing valves? We can arrange an on-site survey that will give you some advice and point you in the right direction.

Servicing & Maintenance Contracts
Keep your valves regularly serviced to maximise performance and certification compliance.

Training
When your valve is delivered, do you need support and training during installation? We have the ability to supply an experienced engineer to offer guidance through the process.

Spares
We offer a full spares program to keep your production up and running. Do make a note of the valve serial number as this will be needed to identify what you need.

Refurbishment
We can offer a strip and inspect service and give you some detail information whether your valve can be refurbished or whether is it more beneficial to purchase a new one. Refurbishments include new parts and a re-paint to return it to new condition.





Tests on an industrial scale reduce planning time and increase process safety!

Test centres in Switzerland, France, England, Brazil, USA and Singapore are available for customer tests under near-production conditions with original machines. It is also possible to test all types of pneumatic conveying setups, even with distances exceeding 200 meter!

Experienced specialists design the test layout according to your wishes and perform the tests.

- Testing of machines and prototypes with original products
- Checking of performance ranges and accuracies
- Testing of the interaction of multiple machines
- Gaining of experience for product processing
- Sampling for laboratory tests and market response
- Customer training
- Remote test monitoring available

Switzerland

Gericke AG
gericke.ch@gerickegroup.com

Netherlands

Gericke B.V.
gericke.nl@gerickegroup.com

China

Gericke (Shanghai) Pte Ltd.
gericke.cn@gerickegroup.com

Germany

Gericke GmbH
gericke.de@gerickegroup.com

USA

Gericke USA, Inc.
gericke.us@gerickegroup.com

Indonesia

Gericke Indonesia
gericke.id@gerickegroup.com

France

Gericke SAS
gericke.fr@gerickegroup.com

Brazil

Gericke Brasil Ltda.
gericke.br@gerickegroup.com

Thailand

Gericke Thailand
gericke.th@gerickegroup.com

United Kingdom

Gericke Rotaval Ltd.
sales.rv@gerickegroup.com

Singapore

Gericke Pte Ltd.
gericke.sg@gerickegroup.com

Malaysia

Gericke Malaysia
gericke.my@gerickegroup.com

For all other countries please contact Gericke AG Switzerland.

GERICKEGROUP.COM

Gericke
RotaVal