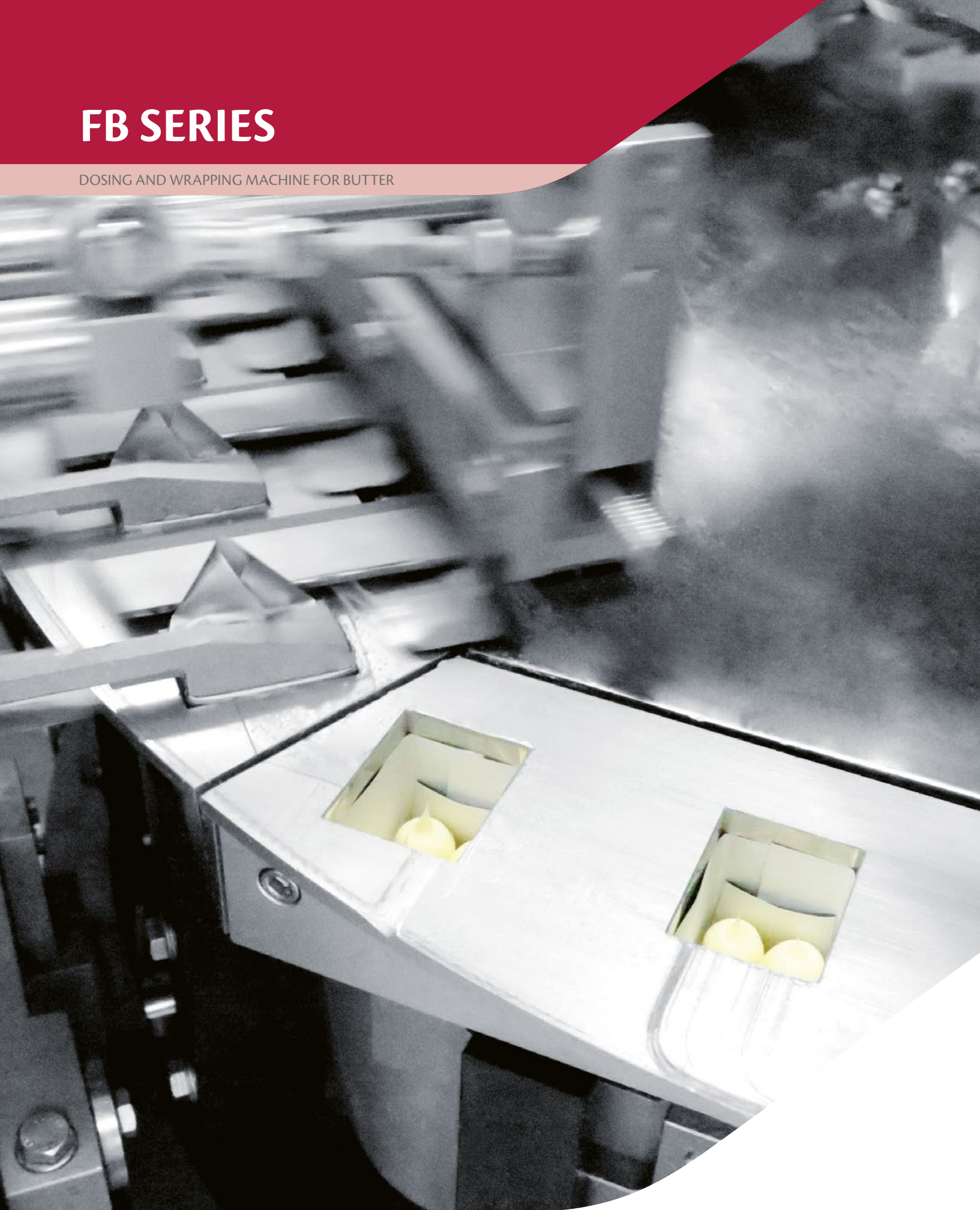


FB SERIES

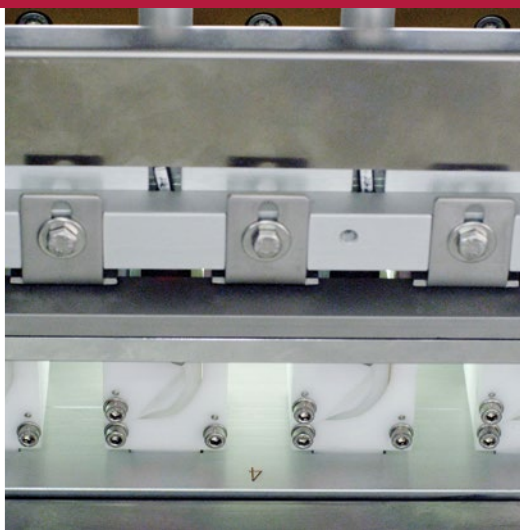
DOSING AND WRAPPING MACHINE FOR BUTTER



FB SERIES DOSING AND WRAPPING MACHINE FOR BUTTER



Foil feeding



Shell forming



Dosing unit

BUTTER DOSING AND WRAPPING TAILORED TO YOUR NEEDS

The FB Series of dosing and wrapping machine for butter in square and rectangular portions, provides the optimum packaging solution at high or low speeds. Compact in size, each version ensures efficient performance and a top quality fold.

The FB Series is developed to suit the customer's specific requirements in terms of processing speeds.

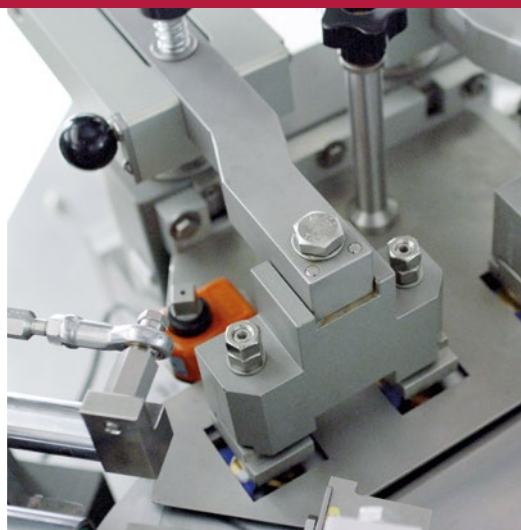
For customers requiring high-speed processing, the FB8 handles 800 ppm ranging from 7 to 20g. Thanks to a compact footprint, user-friendly HMI and a design which allows easy, quick changeover of the portion base size, the FB8 is the ideal choice for dairies wanting optimum productivity and efficiency.

The FB220 is a low-speed fully mechanical machine, offering a production capacity of up to 280 ppm of 7 to 25g wrapped portions.





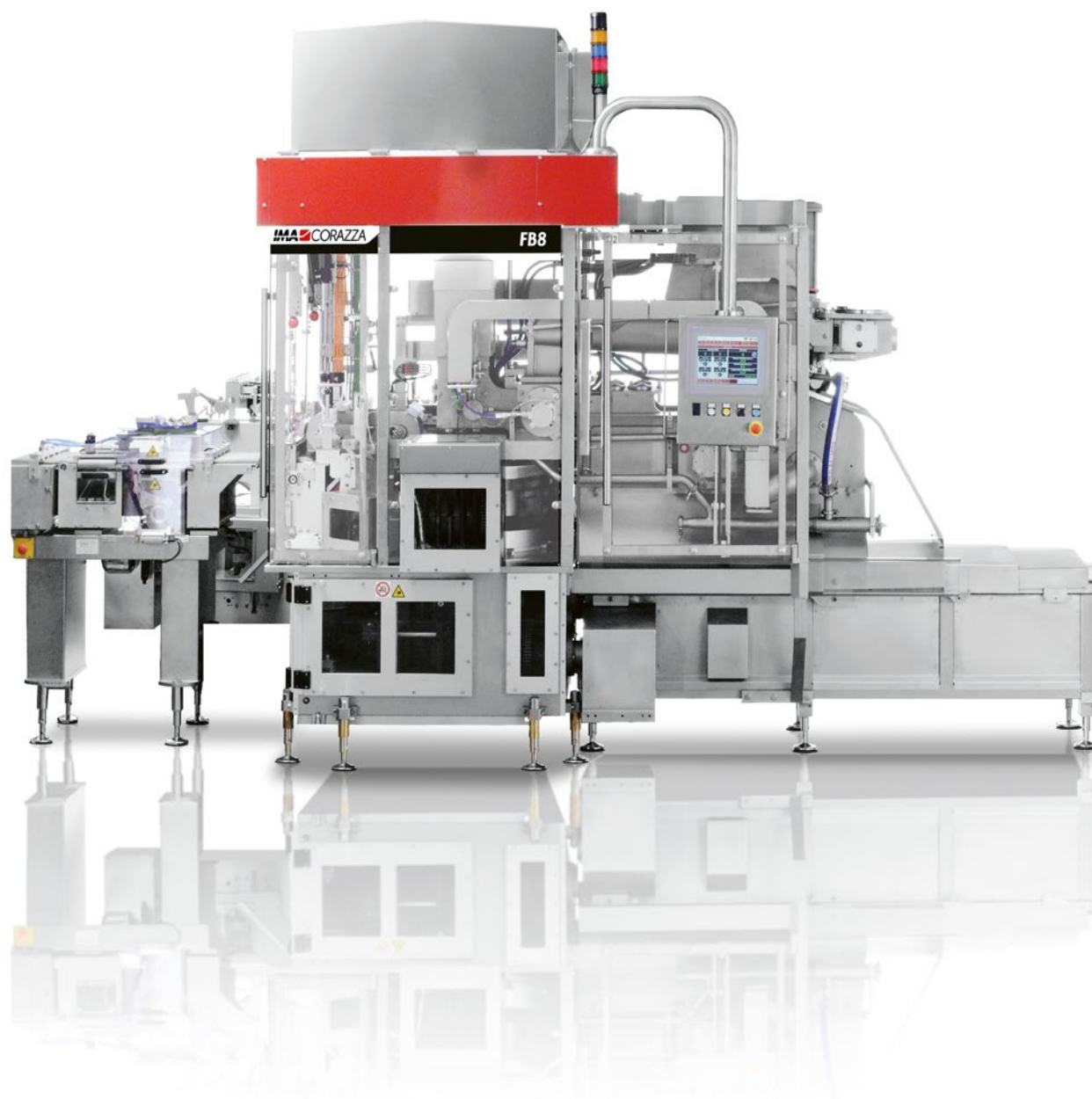
Folding unit



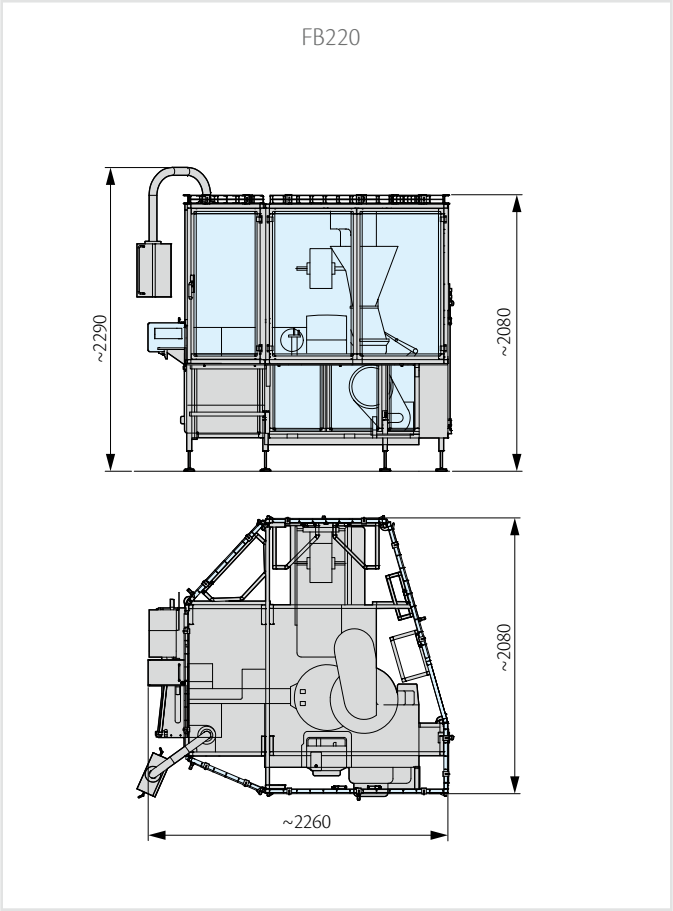
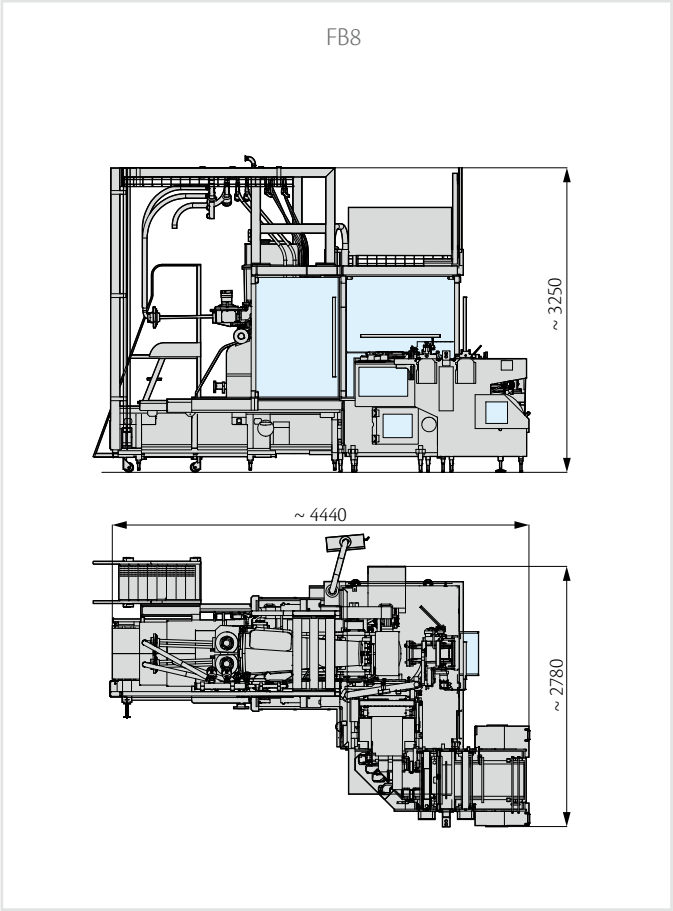
Pressing unit



Product outfeed



TECHNICAL DATA



	FB8	FB220
Production capacity	Up to 800 portions/min.	Up to 280 portions/min.
Full load current	3P x 400 Volt – 50 Hz – 18 Amp	3P x 400 V – 50 Hz – 5 Amp
Compressed air consumption	250 NI/min. (min. op. pressure 6 bar)	100 NI/min. (min. op. pressure 6 bar)
Weight	5,700 Kg approx.	2,250 Kg Approx.

Shape	Rectangular	Square	Rectangular
<p>Box dimensions</p> <p>Diagram of a box with dimensions A, B, and C.</p>	A (min ÷ max)		
	20 ÷ 30	30 max.	20 ÷ 30
	B (min ÷ max)		
	20 ÷ 40	-	20 ÷ 50
	C (min ÷ max)		
	7 ÷ 18	7 ÷ 18	6 ÷ 25
Weight (min ÷ max)			
	7 g ÷ 20 g	7 g ÷ 20 g	7 g ÷ 25 g

