



OTTEVANGER
MILLING ENGINEERS



Rotary dischargers



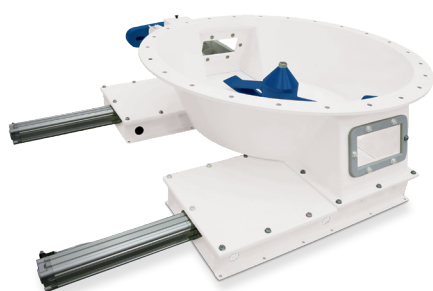
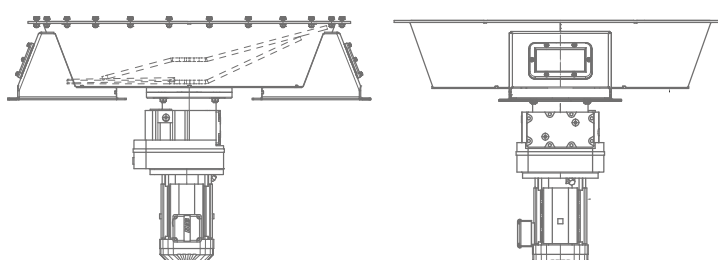
General

Rotary dischargers are highly suitable for the discharging of powders or granules with poor flow characteristics from bins and silos. They can also be used to provide regular feed to processing machines or weighing hoppers.

The structure consists of a fully enclosed cylindrical steel housing with a flange for securing the discharger to the bin outlet. The motor reducer, which is attached to the base with a flange and drives the rotor, is fitted with specially shaped blades. An electro-pneumatically operated discharge slide is provided for products with a tendency to discharge in an uncontrolled manner.

Options

- » stainless steel housing and rotor
- » ATEX motor
- » multiple outlet



Type	Drive (kW)	RPM
500*	2,2	22
930	3	11
1200	4	16
1500	7,5	13

* straight walls instead of beveled

Ottevanger Milling Engineers

Moerkapelle, Aalten and Heteren - The Netherlands

Tel. +31 79 593 22 21

E-mail: info@ottevanger.com

www.ottevanger.com



OTTEVANGER
MILLING ENGINEERS

- » Design » Engineering » Manufacturing » Construction and commissioning
- » Feed mills » Pet food plants » Aqua feed plants » Cereal processing plants
 - » Soybean processing plants » Premix and concentrate plants » Silos
 - » Bulk storage and handling systems » Electric control and automation



Ottevanger Milling Engineers B.V.

Location: Moerkapelle
Moerkapelse Zijde 32
2751 DL MOERKAPELLE
The Netherlands
Tel. +31 (0)79 593 22 21

Location: Aalten
Dinxperlosestraatweg 62
7122 AH AALTEN
The Netherlands
Tel. +31 (0)543 472 688

Location: Heteren
Komkleiland 4
6666 MG HETEREN
The Netherlands
Tel. +31 (0)26 47 906 99

www.ottevanger.com
info@ottevanger.com