

**Qpol XL**

300 TO 350 MM WORKING WHEEL DIAMETER

**POWERFUL AND PRECISE WITH  
PARTICULARLY HIGH SAMPLE THROUGHPUT**



Qpol XL

# EFFICIENCY – EXTRA LARGE



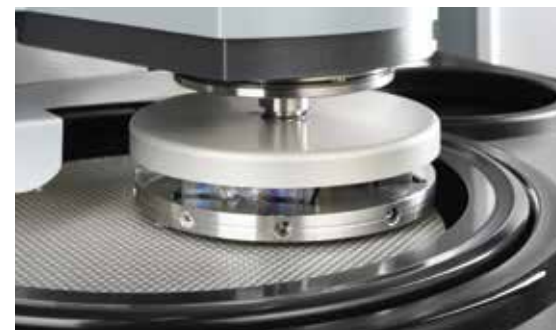
## A RELIABLE POWER PACK

# REPRODUCIBLE PREPARATION RESULTS GUARANTEED



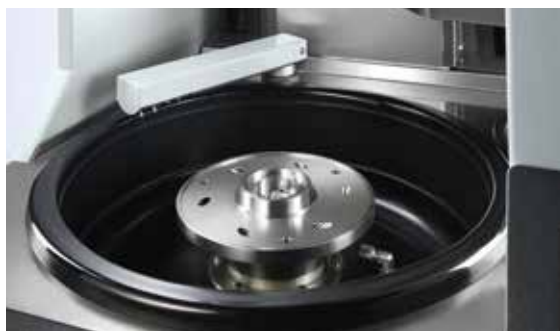
## ROBUST ENGINEERING – FUNCTIONAL DESIGN

The basic requirements when developing the automatic grinder / polisher Qpol XL were a corpus and polishing head of utmost stability. A solid steel construction, powder-coated and a working area lined with stainless steel emphasize the sustainable, and at the same time modern and compact, machine design – made in Germany.



## REMOVAL MEASUREMENT

The QATM Qpol XL comes with a system for precise measurement of material removal – regardless of operating time, sample type, material and hardness, you can easily monitor the material height already removed.



## CONVINCING PERFORMANCE DATA

The drive motor of the working wheel has a power of 2.2 kW and the polishing head of 1.1 kW. The speed of both systems can be operated in clockwise and counter clockwise direction as well as in oscillating movement.



## ADVANCED TECHNOLOGY AND MODULARITY

- | Electronic measurement system for controlled press forces between 50 and 750 N.
- | Integrated removal measurement
- | Intuitive operating software
- | Modular dosing concept with level warning



## CLEANING STATION (OPTION)

In the cleaning station specimens are automatically cleaned with water, ethanol and air or by spin cycling at up to 800 rpm (adjustable). Thus, each preparation step is finalized with a cleaning step to avoid cross contamination.

PUSH-TO-UNLOCK  
SAMPLE HOLDER MOUNTING

# SIMPLE AND TOOL-FREE CHANGING OF SAMPLE HOLDER

Illumination of the complete working area with energy-saving LED lights.





## EASY-TO-OPERATE

# DOWN TO THE LAST DETAIL



## MAXIMUM SAFETY

The motorized acrylic glass safety hood protects the working area of the machine. The transparent hood is equipped with a safety switch and opens automatically when the program is finished. For easy cleaning the hood can simply be unhinged.



## MOTORIZED SWIVELLING DOSING ARM

The fully loaded motorized swivelling dosing arm provides uniform wetting of the working wheel. It offers automatic referencing, automatic nozzle rinsing as well as good accessibility to the dosing hoses.



## PREPARATION FOR EXTERNAL SUCTION

Direct suction of vapor from the working area through suction nozzle.



## CONVENIENT OPERATION

The modern design of QATM's proven control software allows for intuitive and user-friendly operation. Standard preparation methods and typical consumables are pre-installed.

### Features:

- | 7" touch screen
- | Status display and acoustic signal
- | Up to 200 programs and complete preparation methods storable
- | User Account Management with variable user rights
- | USB / Ethernet interface for remote maintenance and data transfer



## INNOVATIVE SOLUTIONS

# MODULAR CONFIGURATION



### MODULAR DOSING SYSTEM

The cleverly integrated dosing system accommodates up to 6 Qdoser Duran glass bottles (1L). When equipping the Qpol XL with "Preparation Dosing System", the suspension containers can be retrofitted in packages of 2, preparing your Qpol for all future requirements. Details like the gentle illumination of the containers and the soft-closing hood top off this well-thought-out equipment option.



### MAGNETIC STIRRER AND LEVEL WARNING

The dosing system can be equipped with a magnetic stirrer. The automated stirring ensures optimum distribution of abrasive particles contained in the suspension before usage. This homogenization process significantly improves the preparation result. The new level detection for suspensions gives a warning before the container is empty, which is refillable in the ongoing process.



### CLEANING BOOST

The spin cycle function „Cleaning Boost“ is integrated into the software and spins the residual liquid off the grinding/polishing medium at the end of the preparation process with max. rpm for 3 seconds.



### SIGNAL LAMP

The optional signal lamp allows monitoring of your Qpol XL from a distance: The red/yellow/green lights show the current state of the machine at a glance.



### RECIRCULATION COOLING AND SEDIMENTATION TANK

Seamlessly incorporated into the machine base and easily accessible via push-to-open door. Lateral guidance of the extendible and rollable unit via slide rails.



## MANUAL CLEANING

Integrated spiral rinsing hose with ball valve allows for manual cleaning of the working area.



## ACCESSORIES

QATM offers a wide selection of standard sample holders with different diameters and for a variety of applications and machines. Clamping of samples with unusual dimensions can be realized with special sample holders.



**Qpol XL**

Application	Automated grinding and polishing of materialographic specimens
Fields of application	Preparation of specimen surfaces for materialographic analysis
Working wheel	Ø300 / 350 mm
Speed working wheel	variable (50 – 600 U/min)
Running direction working wheel	right
Sample holder	Ø159 – 204 mm
Speed sample holder	variable (50 – 350 U/min)
Running direction sample holder	right / left
Pressing system	Central pressing force
Sample holder pressing force	50 – 750 N
Drive power working wheel	2.2 kW (S1 operation)
Drive power head	0.75 kW (S1 operation) resp. 1.1 kW (S3 operation)
Connection power	6 kVA
Power supply	400 V / 50 Hz (3Ph / N / PE), 480 V / 60 Hz (3Ph / N / PE), 220 V / 60 Hz (3Ph / N / PE)
Weight (depending on configuration)	approx. 390 kg

ATM Qness GmbH

Emil-Reinert-Str. 2  
57636 Mammelzen  
Germany

Phone: +49 2681 9539 0  
Fax: +49 2681 9539 27

PREMIUM QUALITY  
MADE IN GERMANY

ATM Qness GmbH

Reitbauernweg 26  
5440 Golling  
Austria

Phone: +43 6244 34393  
Fax: +43 6244 34393 30



info@qatm.com www.qatm.com

## VERDER scientific

VERDER SCIENTIFIC

SCIENCE  
FOR SOLIDS

Verder Scientific is a business field belonging to the Verder Group and sets standards in the development, manufacture and sale of laboratory and analytics devices. Used in quality control, research and development for test-piece preparation and the analysis of solids.

For several decades our companies have supplied production plants and research institutes, laboratories for quality testing and analytics, all kinds of technical specialists and scientists with modern, reliable devices to solve the many and varied challenges they face.

