

VOTATOR II VERTICAL SCRAPED SURFACE HEAT EXCHANGER

New and improved hydraulic lifting system

Reduce downtime with increased flexibility

The newly upgraded Votator II Vertical Lift System offers flexibility to conduct a wide variety of maintenance, sanitation and other inspection activities on your vertical Scraped Surface Heat Exchangers, whether daily, weekly or monthly. This efficient, flexible design allows quick, smooth turnaround times, so that production downtime is minimized. The new design offers dual lift capacity with controlled alignment to ensure efficient operation.

Why choose a WCB Votator II?

The SPX FLOW WCB Votator II range provides consistent and reliable heat transfer performance in a broad range of applications. Available in vertical or horizontal designs the Votator II is built with versatility and durability to adapt to a host of process applications across multiple industries including sanitary, personal care and industrial. The new Vertical Lift System is available both on new units and as a retrofit for existing installations.



FEATURES AND BENEFITS

Greater flexibility for operating needs

The new design enables efficient access to single or twin cylinders for maintenance, cleaning or inspections.

Robust and reliable

The system includes new alignment pins, guide rollers and a heavy duty guidance system to ensure reliable and repeatable operation.

User friendly

New cone and spline alignment tools enable effective re-assembly operations and the controlled alignment ensures smooth lifting and lowering steps.

Faster maintenance

The system is externally positioned onto the support column with hydraulic components visible and easily maintained, repaired, or replaced without impacting the heat exchanger or production performance.

Improved turnaround times

Simultaneous dual shaft/cylinder access is now possible with the new dual foot plate and upgraded hydraulic power pack.

Enhance your existing systems

Simple retrofit conversion kits are available to convert existing Votator II vertical systems.



Robust dual cylinder foot assembly

New heavy duty lifting foot includes tapered engagement pins and holding arms for secure shaft withdrawal



Easy access Inspection, Cleaning and Maintenance

Ergonomically designed for adjustable and secure access to the mutator shaft, scraper blades and seal assembly.



Upgraded hydraulics for robust performance

Strengthened power pack, larger reservoir and new valves all externally mounted for easy access.



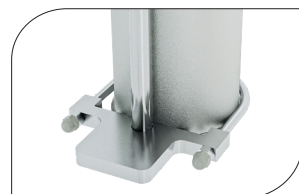
Blade alignment tools

New two piece wide-angled lightweight blade alignment cone folds the scraper blades inwards during shaft insertion mode



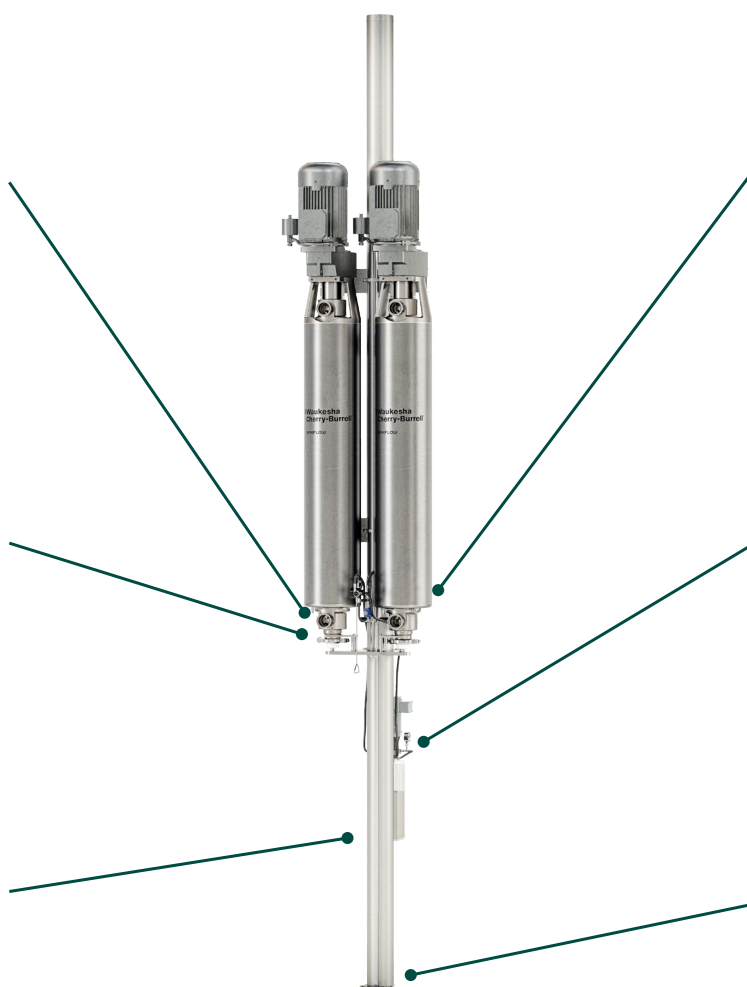
New dynamic foot assembly for single or dual lift

Foot is captured by both the guide rod and guide rollers for controlled vertical motion



Controlled alignment

Two point locked guidance system with heavy duty guide rod ensures accurate alignment



SPXFLOW®

SPX FLOW, Inc. reserves the right to incorporate our latest design and material changes without notice or obligation. Design features, materials of construction and dimensional data, as described in this bulletin, are provided for your information only and should not be relied upon unless confirmed in writing. Please contact your local sales representative for product availability in your region. For more information visit www.spxflow.com.

The green “>” and “X” are trademarks of SPX FLOW, Inc.

ISSUED 02/2023 WCB-Votator-II-Vertical-Scraped-Surface-Heat-Exchanger-FLR-US-0223 COPYRIGHT © 2023 SPX FLOW