

Indirect Batch Dryer



Improve your process with the Indirect Batch Dryer

The Scott Indirect Batch Dryer has an innovative design that allows the indirect dryer to handle temperature-sensitive materials requiring short cycle times by implementing vacuum technology.



Indirect Batch Dryers Features:

- Compact design requires limited space
- Indirectly heated batch drying system
- Hot oil or steam jackets are available
- Vacuum dryer technology
- High-speed choppers are available for de-agglomeration lumps, ensuring maximum exposure of the material's surface area to process
- The most economical drying system for rates below 1,500 lbs/hr

Applications for Indirect Batch Dryers:

Carbon black
Ground rice hulls
Micro glass spheres
Epson Salt
Minerals
Tobacco

Hemp powder
Wood Flour
Pepper Seeds
Wheat Middlings
Activated carbon
Food

Minerals
Chemicals
Collared greens
Pork stock
Soybean meal
Torrefied wood

Fish Oil
Limestone
Wheat straw
Oat Cake
Mica
Wheat flour





Indirect Batch Dryer

Innovative solutions for your processing challenges

Maximizing contact for improved drying:

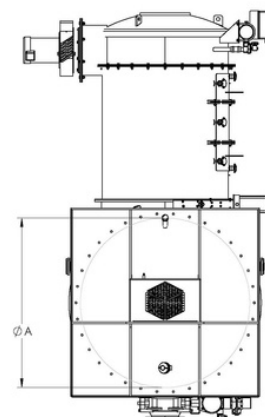
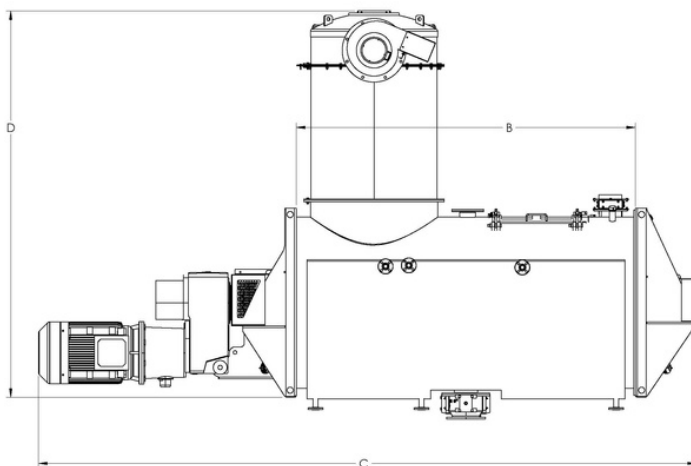
The Scott Indirect Batch Dryer can dry materials to less than 0.5% moisture. The drying process utilizes a mechanically fluidized bed of material to maximize product contact with the reactor vessel.

Our standard size Indirect Batch Dryers include:

	Size	A	B	C	D	Capacity
IND2430	24" x 30"	24	30	120	78	6 CU. FT.
IND3048	30" x 48"	30	48	138	84	10 CU. FT.
IND3648	36" x 48"	36	48	138	90	18 CU. FT.
IND4896	48" x 96"	48	96	186	102	65 CU. FT.
IND48120	48" x 120"	48	120	210	102	82 CU. FT.
IND54120	54" x 120"	54	120	210	108	100 CU. FT.
IND60144	60" x 144"	60	144	234	114	150 CU. FT.

Dimensions are for reference purposes only.

Additional sizes and alternative motor placement configurations are available.



Customize your equipment by contacting us:

605 4th Avenue • New Prague, Minnesota, 56071 • 800-264-9519 • sales@scottequipment.com

