

SmartLoader



Product details

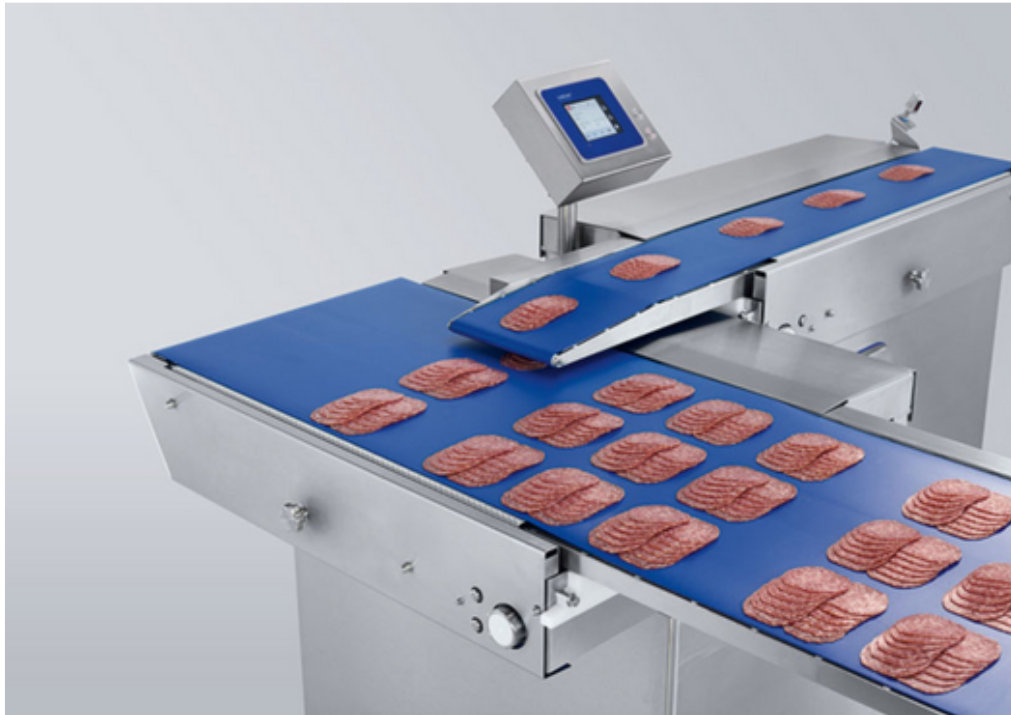
- Portions, groups, creates format sets, overlaps products
- Inserts: format sets, portions, individual slices or pieces

[View online](#)



Weber SmartLoader: flexible loading solution for a wide variety of applications

The compact Weber SmartLoader is a fully automatic side loading system for individual products or entire portions. It consists of a servo-motor-driven line-up conveyor and a grouping conveyor or loading conveyor. Both conveyor units are designed as retraction belts. The line-up conveyor transfers the portions from the upstream component and creates the required portion format (e.g. overlapping) as well as the format set by systematically placing the portions on the loading conveyor. In addition to its hygienic design, the Weber SmartLoader is highly flexible and easy to operate.



Technical Data

| | |
|---|---|
| Number of tracks | max. 2 |
| Pulling length (mm) | max. 600 (optional up to 800) |
| Foil width (mm) | max. 600 |
| Height (mm) | 1385 |
| Infeed width (mm) | 250 |
| Length (mm) | 1282 (+700) |
| Product/portion output per min | 120 (depending on the product/portion size) |
| Individual slice output per track per min | 150/170 (depending on the slice/portion size) |
| Width (mm) | 2181 |

Weber means: service across the board.



Weber Academy.

Maximize line performance through professional training courses.

At the Weber Headquarter in Breidenbach, Germany, we have our own training center, the Weber Academy. Being a provider of complete line solutions, we offer training courses for your Weber Line, tailored precisely to your needs. In doing so, our focus is always on increasing efficiency and optimizing profit in your company.



Weber Guardian.

A safe plan for your production.

Only those who listen can understand. And those who understand can act. With our Weber Guardian program, we harmonize people, machines, and processes to get the most out of production. From preventive maintenance and inspection through targeted personnel development to production support and optimization.



Weber Portal.

Networked thinking, handling together.

You will find everything about your Weber equipment bundled in your personal Weber Portal. Compact, individual and interactive. From your customer profile and that of your machines to e-learning on your setup as well as convenient spare parts ordering and service offers. Are you already registered?

Weber Food Technology GmbH

Günther-Weber-Straße 3 | 35236 Breidenbach | Germany
Phone: +49 6465 918 - 0 | Fax: +49 6465 918 - 11 00
info@weberweb.com | www.weberweb.com

weber

Legal notice

This document was generated automatically on 08/08/2024. All information is non-binding. We reserve the right to make changes in the interest of technical progress. For the latest information on this product, please visit:

<https://www.weberweb.com/portfolio/automation/smartloader/?ref=brochure-qr>