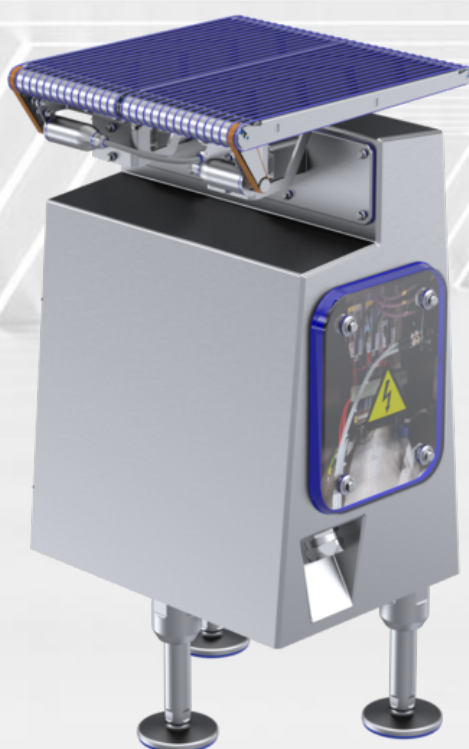


weWEIGH 5000



Product details

- Precisely weight determination
- Robust weighing technology
- Fulfills the highest hygiene requirements

[View online](#)

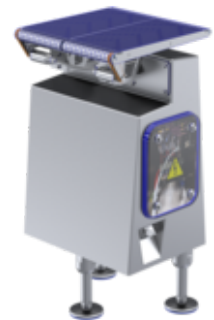


Weber weWEIGH 5000: precise weight determination on up to four lanes.

The weWEIGH 5000 is a digital weighing system for classifying portion weights according to operator settings. The weWEIGH scale was developed specifically for integration into slicing and packaging lines. The robust, yet easy to handle design withstands external influences such as cleaning, and make it an absolutely reliable line component, even in the toughest, high volume production environments. With its open design and externally mounted stainless steel servo motors and weighing cells, the weWEIGH 5000 meets the highest hygiene requirements and allows for easy cleaning.

Advantages

- Scalable: for up to 4-lane applications
- Open design
- Easy to handle



Weber means: service across the board.



Weber Academy.

Maximize line performance through professional training courses.

At the Weber Headquarter in Breidenbach, Germany, we have our own training center, the Weber Academy. Being a provider of complete line solutions, we offer training courses for your Weber Line, tailored precisely to your needs. In doing so, our focus is always on increasing efficiency and optimizing profit in your company.



Weber Guardian.

A safe plan for your production.

Only those who listen can understand. And those who understand can act. With our Weber Guardian program, we harmonize people, machines, and processes to get the most out of production. From preventive maintenance and inspection through targeted personnel development to production support and optimization.



Weber Portal.

Networked thinking, handling together.

You will find everything about your Weber equipment bundled in your personal Weber Portal. Compact, individual and interactive. From your customer profile and that of your machines to e-learning on your setup as well as convenient spare parts ordering and service offers. Are you already registered?

Weber Food Technology GmbH

Günther-Weber-Straße 3 | 35236 Breidenbach | Germany
Phone: +49 6465 918 - 0 | Fax: +49 6465 918 - 11 00
info@weberweb.com | www.weberweb.com

weber

Legal notice

This document was generated automatically on 08/08/2024. All information is non-binding. We reserve the right to make changes in the interest of technical progress. For the latest information on this product, please visit:

<https://www.weberweb.com/portfolio/yield-management/weweigh-5000/?ref=brochure-qr>